



## 11th Annual Nordic Spirit Symposium Feb. 5-6 at CLU



*'Baffin Babes' wintering in the Arctic*

Scandinavians did not stop their far-flung adventures just because the Viking Age came to an end — they pushed on as restless seekers, adventurers and explorers.

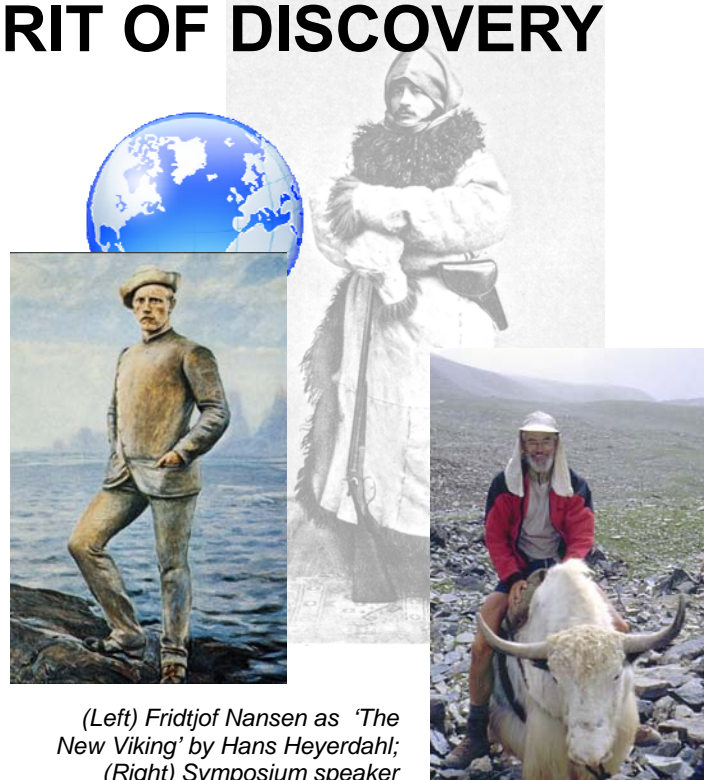
Their landmark accomplishments from the 18<sup>th</sup> to the 21<sup>st</sup> century will be celebrated at the 11<sup>th</sup> annual Nordic Spirit Symposium, which takes place February 5-6, 2010 at California Lutheran University in Thousand Oaks.

**“The Nordic Explorers: From Polar Frontiers to the Silk Road”** will feature distinguished speakers and polished performers, as well as lively visuals and videos.

The general public and the Scandinavian community is invited “to share the time-honored spirit of a symposium, blending music, dining and the free exchange of ideas to enhance the pleasure of learning,” according to Nordic Spirit founder and director, **Howard K. Rockstad**, SACHF past-president.

— Continued on page 6

## the Scandinavian SPIRIT OF DISCOVERY



(Left) Fridtjof Nansen as 'The New Viking' by Hans Heyerdahl; (Right) Symposium speaker Daniel Waugh on a yak, retracing Asian journeys of Swedish explorer Sven Hedin, center.

*'Pushing Through the Storm' by Halfdan Egedius*

**SCANDINAVIAN LECTURE SERIES**  
Coming Attractions p4

**Fred Tonsing Named 'Outstanding Scandinavian American' p3**

**SCANDINAVIAN FESTIVAL at CLU April 17-18 p6**

**NORDIC SPIRIT SYMPOSIUM REGISTRATION FORM**  
**SACHF MEMBERSHIP p8**

## MEMBERSHIP INCREASE REFLECTS 'POSITIVE YEAR'

The year 2009 is drawing to a close and it is time to reflect on the progress of SACHF during this past year. It didn't take long to come up with a list of indicators that support a positive year. I feel it important to share this list with our members and friends. In my opinion, a positive year can be verified by the following:

SACHF membership numbers have shown a marked increase over 2008. The 10<sup>th</sup> annual Nordic Spirit Symposium offered an exceptional, informative and entertaining weekend. The Scandinavian Festival in April was once again of high quality and offered Festival attendees a connection to their heritage. It was especially young people friendly.

The merger of ASF-TO with SACHF gave an additional boost to our membership as well as bringing the Scandinavian Lecture Series to our community and members. Noticeable improvements have been made to the Scandinavian Center. SACHF continues to enjoy and appreciate the support from California Lutheran University.

Additions to the Scandinavian Book Collection and Museum continue to come in. The Scandinavian Book Collection was recently dedicated in memory of **Aina Abrahamson**. A large model of a ship was donated by the Gunnarshaug family in memory of **Dagfinn Gunnarshaug**.

The informative and interesting Brown Bag Lunch topics continue to draw people to the Scandinavian Center on Wednesdays. Help with Scandinavian genealogy is available at the center by appointment. Swedish and Norwegian language classes are available at the center on a weekly basis. A lace-making group meets at the center on a weekly basis. The excellent SACHF newsletter continues to be our main link with our membership along with the SACHF website, [www.ScandinavianCenter.org](http://www.ScandinavianCenter.org)

As you can imagine, all of the above does not merely happen automatically. The cooperative efforts of the SACHF Board, SACHF officers, the Scandinavian Center director, the various SACHF committees and volunteers make it all happen. There are some volunteers that help around the Scandinavian Center on a weekly basis or more often. Volunteers like **H. Torsten Olsson, Sandee Kane, Diane Seal** and **Jan Wennberg** are very much appreciated. *(continued above)*



**SACHF OFFICERS:** From left, Sandra Grunewald, chief financial officer; Glenn Braaten, president; Joy Brooks, secretary; Lana Lundin, vice president; and Howard Rockstad, past president.

Congratulations to the following SACHF Board members who were recently elected to another three-year term: **C. Allan Carlson, Sandra Grunewald, Lana Lundin, Rueben Pertulla, Joann Scott, Paul Sellin and Patricia Sladek**. Welcome new SACHF Board member, **Fred Tonsing**. I look forward to working with our SACHF officers in the coming year: secretary, **Joy Brooks**; chief financial officer, **Sandra Grunewald**; past president, **Howard Rockstad**; newly-elected vice president, **Lana Lundin**.

May the year 2010 be another positive year for SACHF; I urge all members to participate in any or all of the offerings provided by SACHF.

Merry Christmas

Happy New Year!

— Glenn Braaten, SACHF President ♦

The Nordic Spirit Newsletter is a publication of  
The Scandinavian American Cultural & Historical Foundation  
Scandinavian Center at California Lutheran University  
26 Faculty Road, Thousand Oaks CA 91360

### OFFICERS

<b>President</b>	<b>Glenn Braaten</b>
<b>Vice President</b>	<b>Lana Lundin</b>
<b>Secretary</b>	<b>Joy Brooks</b>
<b>Chief Financial Officer</b>	<b>Sandra Grunewald</b>
<b>Past President</b>	<b>Howard Rockstad</b>

### BOARD OF DIRECTORS

Lynn M. Anderson, Larry D. Ashim, Glenn Braaten, Joy Brooks, C. Allan Carlson, Siri Eliason, Sandra Grunewald, Einar Hovind, Larry H.T. Johnson, Gordon Lobnitz, Anita Hillesland Londgren, Lana Lundin, Agneta Nilsson, Rueben Pertulla, Howard Rockstad, Joann Scott, Paul Sellin, Patricia Sladek, Leonard S. Smith, Tuula Stark, Fred Tonsing, Judith Gabriel Vinje

Editor Judith Gabriel Vinje  
[jgabriel.vinje@gmail.com](mailto:jgabriel.vinje@gmail.com)

# Outstanding Scandinavian American Award Goes to Author, Professor Fred Tonsing — Ceremony Set for Feb. 28 at CLU

by **RICHARD LONDGREN**  
Scandinavian Center Director



Fred Tonsing

## Wrote 'College of Our Dreams' Marking CLU 50th Anniversary

Join SACHF members and others on Feb. 28 when SACHF and California Lutheran University will honor **Dr. Ernst F. Tonsing** as Outstanding Scandinavian American of 2010.

The ceremony will take place at 2 p.m. Sunday, Feb. 28, in the Lundring Events Center at CLU. Fred, as he's known to most, taught religion, religious art and Greek at CLU from 1974 till retirement in 2003.

The author of more than 60 published articles and several books, he wrote the CLU history, "College of Our Dreams," published as part of the university's 50<sup>th</sup> anniversary, which is being observed all this year.

Details of Tonsing's career, travel and other interests and accomplishments will be shared during the ceremony.

As a preview, here are some highlights:

- ◆ Emphasizes his Swedish heritage through travel, research, collecting, writing and lecturing; also a past leader/lecturer in the American Scandinavian Foundation of Thousand Oaks; recently elected to the board of SACHF.
- ◆ Degrees from Midland College in Nebraska; Pacific Lutheran Theological Seminary, Berkeley (two masters degrees); UC Santa Barbara (Ph.D.)
- ◆ His career also included serving as an officer in the U.S. Navy, and as a Lutheran pastor in Portland.
- ◆ He currently teaches Greek at St. John's Seminary in Camarillo.
- ◆ Wrote the 50<sup>th</sup> anniversary book about Holy Trinity Lutheran Church (and is a member of the congregation.)
- ◆ Has lectured about his second cousin, aviator Amelia Earhart, and will present a program about her as

part of the SACHF Scandinavian Lecture Series in May.

◆ He recently became a member of the SACHF Board of Directors.

**Siri Eliason** is chair of the SACHF committee overseeing the event. "Share with us in conferring this honor of Outstanding Scandinavian American on Dr. Fred Tonsing," she said. She invites all to the CLU Lundring Events Center the afternoon of Sunday, Feb. 28 for the ceremony and refreshments. ◆

◆ For information, contact Siri Eliason at 805-241-3356 or e-mail her at [sirieliason@netzero.net](mailto:sirieliason@netzero.net)



Norman Borlaug

'World's Greatest Farmer' named to Scandinavian American Hall of Fame

**T**he late Norwegian-American Norman Borlaug will be inducted into the Scandinavian American Hall of Fame in California at the Nordic Spirit Symposium. SACHF Board member Larry Johnson will give an overview of this Norwegian American's contributions. Dr. Borlaug was an agricultural scientist and humanitarian who made his name in the 1960s as the "Father of the Green Revolution," resulting in radical changes in agriculture around the world, and earning for him the Nobel Peace Prize. Also heralded as the "World's Greatest Farmer," he is credited with saving more lives than anyone else in history. He died in September at the age of 95. ◆

## the SCANDINAVIAN AMERICAN HALL OF FAME IN CALIFORNIA

Leif Erikson, first European in North America  
Harold "Swede" Carlson, Korean War aviator  
Bernt Balchen, aviator and polar explorer  
Ralph W. Samuelson, water-ski pioneer  
Mikkel and Torjus Hemmestvedt, ski champs  
Sparky Anderson, baseball coach  
Knut Haukelid, WWII hero  
Babe Didrikson Zaharias, athlete  
Knut Rockne, football coach  
Sonja Henie, ice-skating champion  
Sondre Norheim, pioneer of modern skiing  
Otto Heino, master potter  
John A. "Snowshoe" Thompson, postal hero  
Eliel Saarinen and Eero Saarinen, architects  
Victor Borge, entertainer  
Jean Hersholt, actor

# Scandinavian Lecture Series

Sonja Henie

## FROM NORTHERN LIGHTS TO HOLLYWOOD STARS

**Ingrid Isaksen**

*Roth Nelson Room*

*Sunday, Jan. 24, 2 p.m.*

Follow the journey from Norway to Southern California of Serine Dagsland Isaksen, seamstress and dress designer for the stars, and learn about her friendship with fellow Norwegian Sonja Henie, the “Queen of the Ice,” at the next program in the Scandinavian Lecture Series, sponsored by SACHF.



The lecture will take place at 2 p.m. Sunday, Jan. 24, in the Roth Nelson Room on the CLU campus. Dagsland’s daughter, **Ingrid Isaksen**, will share anecdotes from the professional life of her determined, energetic and charming mother. She will tell about the many kindnesses of some well-known clients, such as producer Irene Selznick (“A Streetcar Named Desire”); actresses Myrna Loy, Merle Oberon, Norma and Moira Shearer; and the wives of Hollywood stars Douglas Fairbanks Sr. (Lady Ashley), Douglas Fairbanks Jr. and Gregory Peck.

The seamstress’ longtime association and friendship with Sonja Henie also involved her young daughter, who will tell of her mother’s lessons on discretion and tact in dealing with famous clients and the press. Followers of fashion will see examples of design, fabric and some details of couturier clothing construction. Admission is free.

The series is sponsored by the Scandinavian American Cultural and Historical Foundation and the CLU Athletics Department. Post-lecture refreshments will be available at the Scandinavian Center located at 26 Faculty Road. For information, contact Anita Londgren at 805-241-1051. ♦

**The Scandinavian Lecture Series originated as a project of the American Scandinavian Foundation of Thousand Oaks. Last spring, ASF-TO merged with SACHF, which will continue to bring lively Scandinavian speakers and topics to CLU. All lectures are open to the public, with free admission.**

## Strindberg Players Offer ‘Dance of Death’ in March

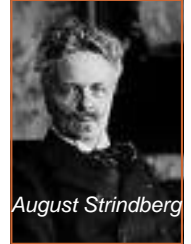
*Translation by Anne-Charlotte Harvey*

*Overton Hall*

*Sunday, March 28, 2 p.m.*

August Strindberg, Sweden’s foremost dramatist, used a pending silver anniversary to show his mastery at portraying intriguing characters. “Dance of Death” is a biting, deadly but also funny verbal duel between an artillery captain and his wife – modeled on Strindberg’s sister and brother-in-law – facing their quarter-century anniversary in self-imposed isolation in a fortress off the west coast of Sweden.

This concert reading of a new translation by **Anne-Charlotte Harvey**, professor emeritus of theater at San Diego State University, is produced by TASSLA (The August Strindberg Society of Los Angeles). Admission is free. The event is sponsored by the Scandinavian American Cultural and Historical Foundation and CLU’s Theater Arts Department. Post-performance refreshments will be available at the Scandinavian Center, 26 Faculty Road. ♦



*August Strindberg*

## ‘Amelia Earhart – My Cousin’

**Ernst F. Tonsing**

*Roth Nelson Room.*

*Sunday, May 23, 2 p.m.*



When Amelia Earhart disappeared in 1937 during her attempt to be the first person to fly around the globe, she was the most famous woman in the world. She had accomplished many “firsts,” including being the first after

Charles Lindbergh to fly solo across the Atlantic and from Hawaii to California,

She was also an author, social worker, college professor, businesswoman, clothing designer, popular lecturer and a promoter of women’s rights. She repaired aircraft engines, danced with the Prince of Wales, and stole off with Eleanor Roosevelt for a midnight flight over Washington, D.C.

**Ernst F. Tonsing**, a second cousin of the aviatrix, will recall her life and family stories about her in an illustrated talk. Admission is free. Co-sponsored by the Scandinavian American Cultural and Historical Foundation and the CLU History Department. For more information, contact Anita Londgren at 805-241-1051. ♦

*Check out SACHF on the Web*  
**[www.ScandinavianCenter.org](http://www.ScandinavianCenter.org)**

# IT'S NOT TOO EARLY TO . . . ***START THINKING SCANFEST 2010***

The Scandinavian Festival will transform the CLU campus April 17-18, 2010. The "affordable family fun" theme will continue: kids 12 and under will get in free, with admission for those over 12 only \$5 a person.

The festival is a component of the Scandinavian American Cultural and Historical Foundation, with scores of volunteers working behind the scenes for months organizing and preparing.

Besides the traditional music and dance performances, the festival will feature varied crafts and games for kids, many informational booths related to Scandinavia, lots of food, and many "shops" on the parkway of the campus. Young soccer players can get instruction from CLU athletes, and many of those athletes will later compete in a soccer match as well.

Demonstrations and lectures will be held throughout the weekend event. Visitors can buy "opportunity drawing" tickets for a chance to win a journey on a Holland America Line cruise ship. During the two days, many other prizes will be awarded "on the spot."

Sunday morning, a Scandinavian worship service will be held in the CLU Samuelson Chapel. The Rev. **Larry Johnson**, SACHF board member, will coordinate the service (English as well as Scandinavian languages.). Another board member, the Rev. **Rueben Perttula**, will also participate.

As at previous festivals, the Viking and Sami encampments will entertain and educate folk. A car display will feature classic and contemporary vehicles.

The Norwegian Elkhounds will return; minstrels will offer their tunes as they tour the beautiful Cal Lutheran campus; and the CLU Alumni Association will again feature large displays about world leaders who have won the Scandinavia-based Nobel Prizes.

For general information about the festival, call festival director **Lana Lundin** at 805-482-6327 or cell 805-216-3373, or e-mail her at [lane@tripnet.se](mailto:lane@tripnet.se) ♦

## **Call for Volunteers!**

*Volunteers are always needed at the Scandinavian Festival. For information call*

**Anita Londgren**

805-241-1051

or e-mail her at

[KronaPress@verizon.net](mailto:KronaPress@verizon.net)



♦ Norwegian and Swedish language classes for children and adults continue at the Scandinavian Center. For information, call 805-241-0391 or e-mail [ScanCenter@callutheran.edu](mailto:ScanCenter@callutheran.edu)

### **SCANDINAVIAN CENTER HAPPENINGS**

♦ The Scandinavian Center's genealogy service has also grown, with the addition of the Swedish Genline program to support the research assistance offered by the center's genealogist, **Jerry Baldwin**. SACHF member **Diane Seal** has set up a map of Scandinavia for visitors to "pin" the source of their roots.

♦ Two SACHF Board members recently shared knowledge related to Scandinavia at the Scandinavian Center's increasingly popular Brown-Bag Lunch gatherings that take place every Wednesday noon. **Lynn Anderson** recounted his trip on the Göta Canal in Sweden, and **Judith Gabriel Vinje** led a "hands-on show and tell" about the nature and history of the Norse runic alphabet. Soprano **Cara Clove** sang "Völuspá" from the sagas. Persons interested in being alerted to coming topics can ask to be on the e-mail announcement sent by Scandinavian Center Director **Richard Londgren**. Call him at 805-241-1051 or e-mail him at [KronaPress@verizon.net](mailto:KronaPress@verizon.net)

Kicking off the two-day event, Symposium-goers will mingle with presenters and performers at a gala reception at the Scandinavian Center adjacent to the CLU campus, beginning at 5:30 p.m. Reservations are requested. The Friday evening program begins at 7 p.m. in Samuelson Chapel on the CLU campus. Saturday sessions begin at 9 a.m., also in Samuelson.



First held in 2000, the Nordic Spirit Symposiums have focused on the Viking Age several times, as well as World War II, immigration to the United States, current trends in Scandinavia, and other subjects, featuring noted experts, scholars

and authors from Europe and North America.

This year's theme will center around adventurers such as Norwegian hero Fridtjof (meaning "Daring Viking") Nansen, born in 1861, the greatest of all polar explorers, who was also a diplomat and humanitarian, receiving the Nobel Peace Prize in 1922 for his work as a League of Nations High Commissioner. Nansen led the first crossing of Greenland by ski, and achieved great success with his Arctic expedition aboard Fram. **Tommy Dickey** of the Ocean Physics Laboratory at UC Santa Barbara will take a look at Nansen's "inspirational life."

**Sherrill Harbison** will explore how the concept of heroism changed in the 19th century and why the Arctic – with its Norwegian poster-boy Fridtjof Nansen – was the perfect field for the last innocent hero-worship of the 20th century. Her topic is "Ultima Thule – Polar Exploration and the Heroic Imagination."

18<sup>th</sup> century Swedish botanist Carl Linnaeus, inventor of the modern naming system in botany, also wrote travel books about Swedish provinces. In 2006, **Roland Thorstensson** and **Anders Björling** retraced two of Linnaeus's journeys. Both Thorstensson and Björling are native Swedes, but Minnesota and Gustavus Adolphus College have been their "home" for a long time, for Roland as a professor of Scandinavian Studies, for Anders as a college administrator and, since his retirement, as a world traveler and nature photographer.

While Swedish traveler Sven Hedin might be seen by some as a "Foreign Devil on the Silk Road," he was the last of the great explorers of inner Asia in the late 19<sup>th</sup> and early 20<sup>th</sup> centuries, according to **Daniel C. Waugh**, professor emeritus at the University of Washington, where he taught Russian and Central Asian history. Waugh will share the landscapes he himself traveled, retracing and photographing

some of the routes Hedin traversed a century earlier.

The work and life of the "Prophet of the North," Canadian-Icelandic anthropologist-explorer Vilhjalmur Stefansson (1879-1962), will be discussed by **Gísli Pálsson**, focusing on Stefansson's expeditions to the Canadian Arctic (1907-1918), his involvement with Inuit, his accomplishments and his shortcomings.

Two Norwegian women, **Kristin Folsland Olsen** and **Ingeboerg Tollefsen**, will present "Baffin Babes – 80 Days on Skis in the Arctic." In 2009, four Scandinavian girls experienced a winter adventure on Baffin Island in the Canadian Arctic. The "Baffin Babes" spent three months traveling 1200 km on skis, pulling sleds weighing 120 kg. The two Norwegians will talk about the challenges, showing pictures and videos from the trip.



Performing artists are always a favorite part of the Symposium line-up. This year, **Magnus Martensson**, music director of the Scandinavian Chamber Orchestra of New York, will perform comedy and music in the style of the famous entertainer, Victor Borge, in a program titled "Excuse Me, Does My Piano Count as One Carry-On?"



*Diane Jarvi*

Known in Finland as Minnesota *Satakieli* – the Minnesota Nightingale – **Diane Jarvi** will perform at the Saturday evening dinner. Singer of folk and world music, poet, songwriter, guitarist and player of the *kantele* (Finnish folk harp), she was Finlandia Foundation National Performer of the Year in 2000. The dinner will take place in the Lundring Events Center at CLU, beginning at 7 p.m.

Reservations are required. (See reservation form on back page.)

The Nordic Spirit Symposium is sponsored by the Scandinavian American Cultural and Historical Foundation and California Lutheran University, and is made possible by generous grants from the Barbro Osher Pro Suecia Foundation and the Royal Norwegian Consulate General in San Francisco. ♦

For further information, call 818-788-4552  
e-mail [seeallan@sbcglobal.net](mailto:seeallan@sbcglobal.net)  
or see [www.ScandinavianCenter.org](http://www.ScandinavianCenter.org)

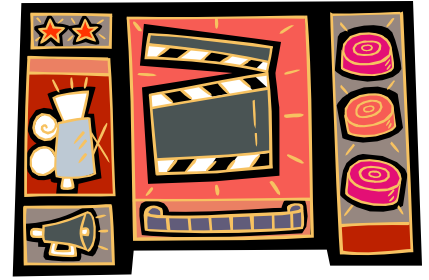
# 'THE NORDIC EXPLORERS: FROM POLAR FRONTIERS TO THE SILK ROAD'

# Scandinavian Film Festival L.A.

The 11th annual Scandinavian Film Festival L.A. is slated for Jan 9-10 and Jan. 16-17 at the Writers Guild Theater in Beverly Hills. The festival has been called "the place where Nordic film winters in Southern California."

The festival program pivots around screenings of as many as possible of the Nordic "Oscar" submissions with additional current feature films, shorts and documentaries from Denmark, Finland, Iceland, Norway and Sweden.

Taking place during the annual "film season" which culminates with the Academy Awards, the festival offers a veritable feast of Nordic films to its audience of Los Angeles film enthusiasts, industry professionals and "homesick Nordics." For further information please log-on to [www.scandinavianfilmfestivalla.com](http://www.scandinavianfilmfestivalla.com) ♦



## IN THE NEWS

### Norwegian American Foundation Purchases Norway.com Web Site

During the past 10 years, the Norwegian American Foundation has grown to become a leading voice in the United States for news, events and exchanges between the two countries, and is "very well connected" to the Friends of Norway Caucus on Capitol Hill.

In 2004, the Norwegian American Foundation entered into partnership with the Norse Federation of Oslo, Norway to purchase the Norway.com website from a private investment group in Norway. Cooperatively, the website has been operated by the two organizations for the past five years.

On November 19, the Norwegian American Foundation officially signed documents taking full ownership of the Norway.com Web site.

The Norway.com website will be headquartered in Seattle, Washington and operated from NAF offices.

The Norwegian American Foundation will continue its collaboration with the Norse Federation on education, culture, and promoting ties between Norway and the United States.

With the purchase of Norway.com, the Norwegian American Foundation now impacts people in 200 countries throughout the world with relevant information about Norway on the website.

The Norway.com web site is an integral component in the Norwegian American Foundation's communication platform, which includes a monthly e-newsletter to thousands of Norwegian-Americans, and the Norwegian American Weekly newspaper.

The Norwegian American Foundation's chair is Dr. Loren Anderson, president of Pacific Lutheran University, with Consul Kim Nesselquist holding the position of CEO.

## NORTHERN BEAUTY



Arctic light captured by artist William Bradford in this interplay of sun and shadow on the glacier in "Icebound Ship"

*Linnea Borealis, Twinflower — which Swedish botanist Carl Linnaeus named after himself.*



Saltoluokta in Swedish Lapland..



Andkilvatnet Norway

Nordic Spirit Symposium speaker Anders Björling took this photo of Andkilvatnet, Norway along the route taken by Linnaeus.

## MAKE YOUR RESERVATIONS FOR NORDIC SPIRIT SYMPOSIUM

# NORDIC SPIRIT SYMPOSIUM

# 2010

RESERVATION ORDER FORM

FEBRUARY 5-6 AT CLU

Reservation deadline for Saturday Lunch and Dinner is January 25

	Quantity	General Admission	Quantity	SACHF Members	Students	Total Amount
<b>Fri. Eve &amp; Sat</b>		\$55 \$50 by Jan. 15		\$40 \$35 by Jan. 15	Free	
<b>Fri. Eve only</b>		\$20 \$15 by Jan. 15		\$15	Free	
<b>Sat. only</b>		\$40 \$35 by Jan. 15		\$30 \$25 by Jan. 15	Free	
<b>Fri. Reception</b>		\$10		\$10	\$10	
<b>Sat. Luncheon</b>		\$12			\$12	
<b>Saturday Dinner</b> <input type="checkbox"/> Petit filet mignon <input type="checkbox"/> Grilled salmon <input type="checkbox"/> Vegetarian		\$38			\$38	
<b>SACHF Membership</b>		\$35 individual \$50 household				<b>FILL OUT COUPON BELOW</b>
<b>TOTAL</b>						

## NORDIC SPIRIT SYMPOSIUM reservation form

Mail with check to: Nordic Spirit Symposium, 26 Faculty Road, Thousand Oaks CA 91360

Name (each person) \_\_\_\_\_  
 \_\_\_\_\_  
 Street Address \_\_\_\_\_  
 \_\_\_\_\_  
 City, State, ZIP \_\_\_\_\_  
 \_\_\_\_\_  
 E-mail address \_\_\_\_\_  
 \_\_\_\_\_  
 Phone \_\_\_\_\_  
 \_\_\_\_\_

Check out SACHF on the Web — [www.ScandinavianCenter.org](http://www.ScandinavianCenter.org).

Please make checks payable to **SACHF** or **Scandinavian American Cultural and Historical Foundation** and mail to C. Allan Carlson, 4949 Tyrone Ave, #7C, Sherman Oaks, CA 91423.

- Individual \$35
- Household (family) \$50
- Full-time student \$20
- Sponsor-organization \$75
- Nordic Golden Circle (Life) \$1,000
- Patron \$500
- Corporate member \$250
- Other \_\_\_\_\_

### SACHF MEMBERSHIP

Name (s) \_\_\_\_\_  
 \_\_\_\_\_  
 Address \_\_\_\_\_  
 \_\_\_\_\_  
 City/State/Zip \_\_\_\_\_  
 \_\_\_\_\_  
 E-mail address \_\_\_\_\_  
 \_\_\_\_\_  
 Phone \_\_\_\_\_  
 \_\_\_\_\_